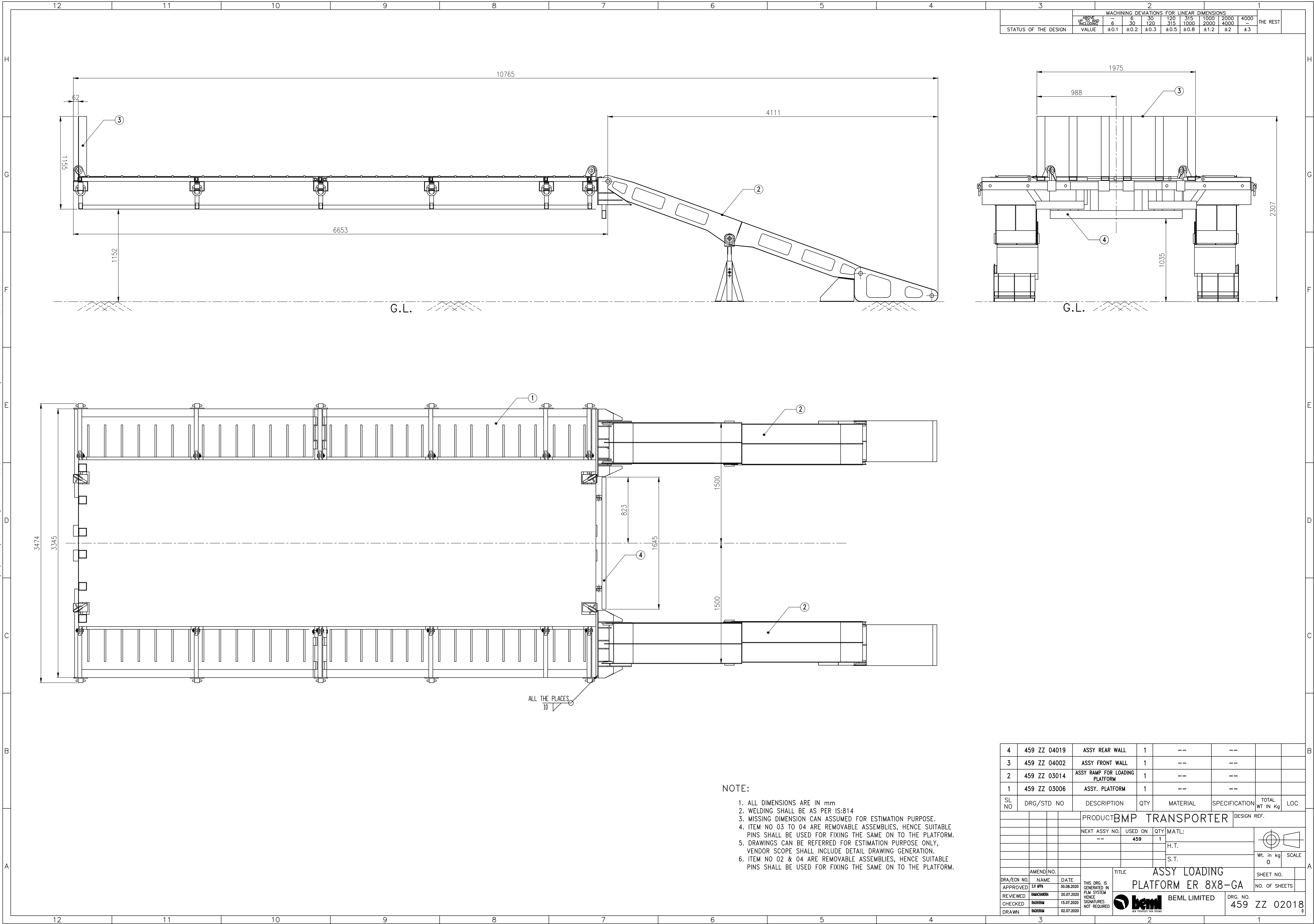


COPY RIGHT & CONFIDENTIAL
This document is the exclusive property of BEML and contains confidential information. This document or its contents shall not be used, reproduced or disclosed in whole or in part without prior written permission of BEML. This document and all its copies shall be returned to BEML on demand.



NOTE:

1. ALL DIMENSIONS ARE IN mm
2. WELDING SHALL BE AS PER IS:814
3. MISSING DIMENSION CAN ASSUMED FOR ESTIMATION PURPOSE.
4. ITEM NO 03 TO 04 ARE REMOVABLE ASSEMBLIES, HENCE SUITABLE PINS SHALL BE USED FOR FIXING THE SAME ON TO THE PLATFORM.
5. DRAWINGS CAN BE REFERRED FOR ESTIMATION PURPOSE ONLY, VENDOR SCOPE SHALL INCLUDE DETAIL DRAWING GENERATION.
6. ITEM NO 02 & 04 ARE REMOVABLE ASSEMBLIES, HENCE SUITABLE PINS SHALL BE USED FOR FIXING THE SAME ON TO THE PLATFORM.

4	459 ZZ 04019	ASSY REAR WALL	1	--	--		
3	459 ZZ 04002	ASSY FRONT WALL	1	--	--		
2	459 ZZ 03014	ASSY RAMP FOR LOADING PLATFORM	1	--	--		
1	459 ZZ 03006	ASSY. PLATFORM	1	--	--		
SL NO	DRG/STD NO	DESCRIPTION	QTY	MATERIAL	SPECIFICATION	TOTAL WT IN Kg	LOC
PRODUCT BMP TRANSPORTER							DESIGN REF.
			NEXT ASSY NO.	USED ON	QTY	MATL:	
			--	459	1	H.T.	
						S.T.	
	AMEND NO.						
DRA/ECN NO.	NAME	DATE	THIS DRG. IS GENERATED IN PLM SYSTEM HENCE SIGNATURES NOT REQUIRED				
APPROVED	SV APPA	30.08.2020					
REVIEWED	RAJAGURU	20.07.2020					
CHECKED	RAJAGURU	15.07.2020					
DRAWN	RAJAGURU	02.07.2020					
			TITLE			SHEET NO.	
			ASSY LOADING PLATFORM ER 8X8-GA			NO. OF SHEETS	
			BEML LIMITED			DRG. NO.	
			459 ZZ 02018				